

MONTHLY MEMBERSHIP PROGRESS REPORT

District 202 J

Results as of: 9/30/2024

GMT:

LOCATION NEW ZEALAND

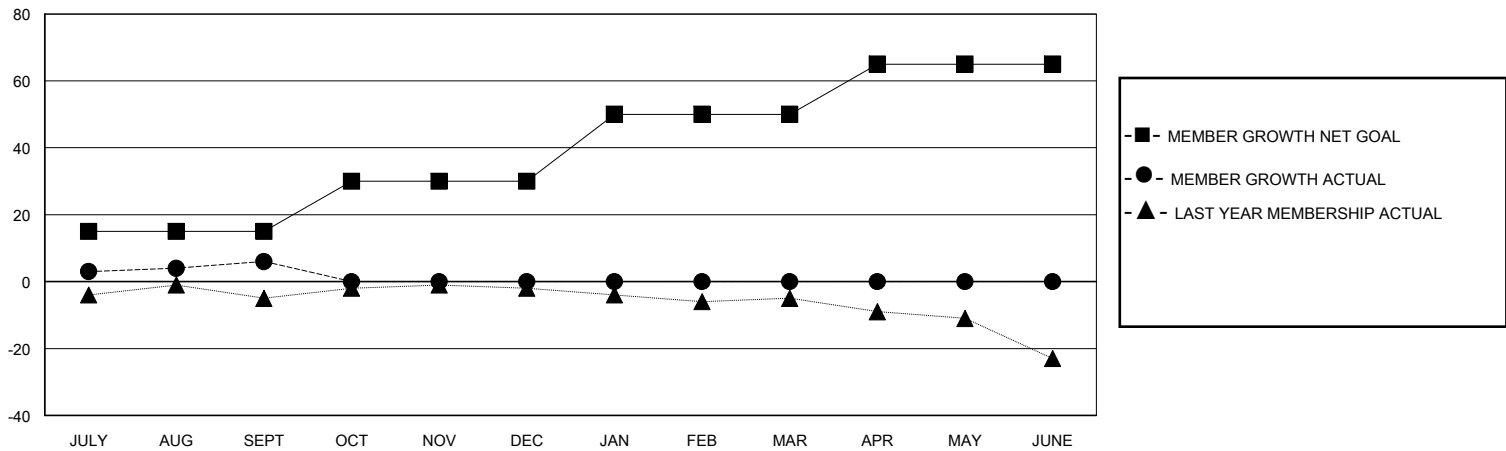
GMT CA

| Clubs | | | | Members | | | |
|-----------------------|---------------|-----------|---------------|-----------------------|------------------------|----------------------|--|
| RESULTS FOR 2024-2025 | | | | RESULTS FOR 2024-2025 | | | |
| QUARTER | NEW CLUB GOAL | NEW CLUBS | DROPPED CLUBS | QUARTER | MEMBER GROWTH NET GOAL | MEMBER GROWTH ACTUAL | DROPPED MEMBERS ACTUAL (including transfers) |
| JULY/AUG/SEPT | 0 | 0 | 0 | JULY/AUG/SEPT | 15 | 26 | 17 |
| OCT/NOV/DEC | 0 | 0 | 0 | OCT/NOV/DEC | 15 | 0 | 0 |
| JAN/FEB/MAR | 0 | 0 | 0 | JAN/FEB/MAR | 20 | 0 | 0 |
| APR/MAY/JUNE | 1 | 0 | 0 | APR/MAY/JUNE | 15 | 0 | 0 |

GOALS AND ACTUAL NEW CLUBS CUMULATIVE



GOALS AND ACTUAL MEMBERS CUMULATIVE



| | | |
|--|---|--|
| DROPPED CLUBS: 0 | 12 CLUBS OF 33 ADDED 1 OR MORE NEW MEMBERS | GENDER DISTRIBUTION MALE 850 (74.17%) FEMALE 296 (25.83%) |
| DROPPED MEMBERS DECEASED 6 CLUB CANCELLED 0 OTHER 11 TOTAL 17 | CLICK HERE FOR CUMULATIVE MEMBERSHIP DATA | TOTAL FAMILY UNIT MEMBERS 0 FAMILY MEMBERS PAYING HALF DUES 0 |